



# Supply Chain Expert Advisory Group Factsheet

Australia’s critical infrastructure environment is changing, becoming increasingly interconnected and interdependent. Critical infrastructure entities are increasingly reliant on a network of suppliers and managed service providers, which are not subject to security regulation. Supply chain vulnerabilities and hazards pose a cross-sector risk that can rapidly cascade across all critical infrastructure.

The **Supply Chain Expert Advisory Group (SCEAG)** was stood up under the Trusted Information Sharing Network (TISN), to support securing and uplift of critical infrastructure supply chains. In partnership with Government, SCEAG works to enhance the shared understanding of critical infrastructure supply chains and interdependencies, build a common understanding of supply chain threats within and across different sectors, and work to develop best practice strategies for assessing and mitigating supply chain risks.

To support critical infrastructure asset owners and operators, SCEAG recognises the need to identify the most critical supply chain risks that cut across critical infrastructure sectors and establish an agreed view of the spectrum of threats to critical infrastructure. This document provides a summary of these actions.

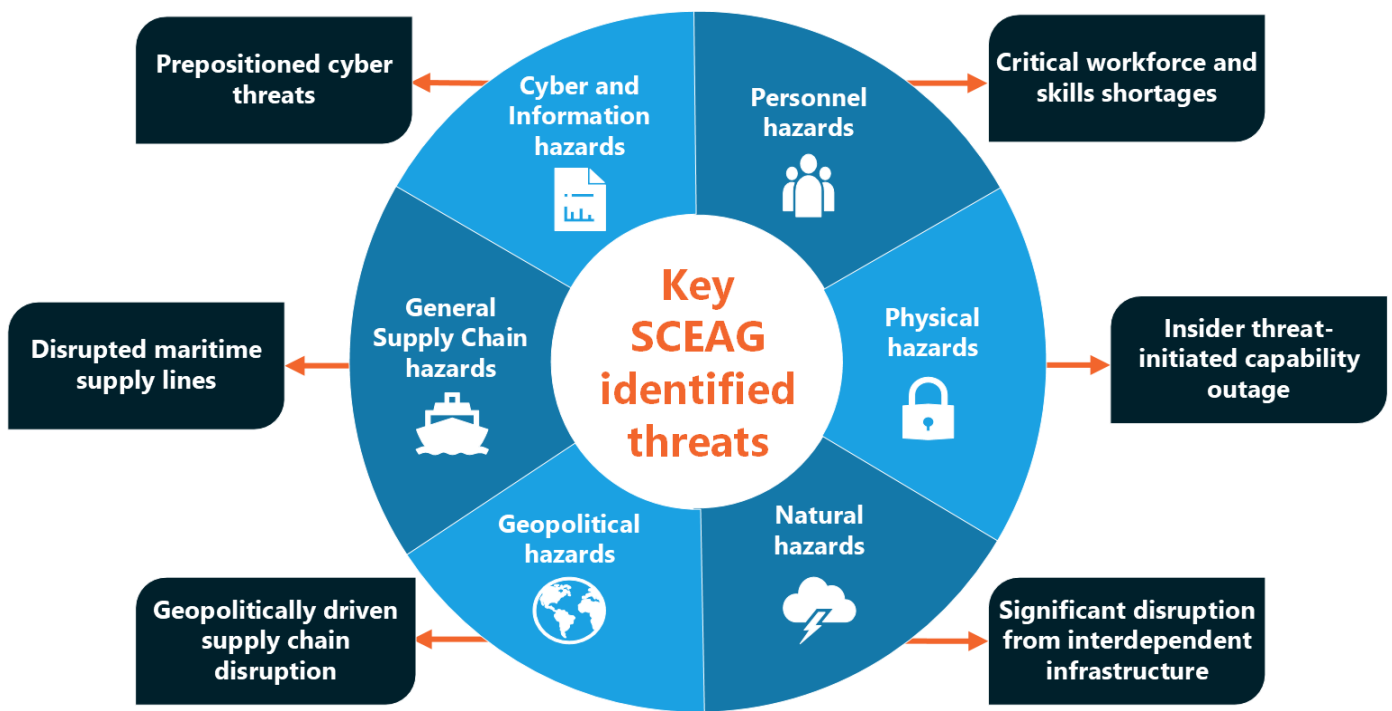


Figure 1: Based on the 2024 Critical Infrastructure Annual Risk Review, SCEAG identified the biggest threats per hazard type, affecting critical infrastructure supply chains.

### Other hazards identified by the SCEAG

- Supplier concentration risk
- Availability of locally sourced raw materials used in the production of chemicals for water treatment
- Legacy systems
- Industrial land shortages and planning failures
- Grid instability and supply disruption



## Critical Infrastructure Supply Chain Best Practice Approaches to Resilience

### Risk management and resilience planning

- Critical infrastructure asset owners and operators should understand what is critical about their business and establish their risk management programs to include consideration of all hazards scenarios.
- Business continuity plans should be tested and exercised regularly, and alternative supply arrangements should be considered for emergency or unforeseen circumstances.

### Supply chain diversification

- Asset owners and operators should look to reduce single points of failure and foreign dependency.
- Supply chain diversification alleviates the additional risks posed by:
  - Foreign ownership, control, or influence exposure and related risks;
  - Availability of resources in the event of disruption to supply chain routes during times of conflict or other geostrategic breakdown.
- Supply chain diversification offers the ability to uplift domestic capacity/capability and can include diversification of suppliers, transport modes, and energy sources (including alternative fuels) to mitigate exposure to supply chain risks.

### Collaboration

- Critical infrastructure asset owners and operators should maintain a strong focus on partnerships between government, industry, academia and other critical infrastructure sectors. The TISN is the primary forum for connecting owners and operators of Australian critical infrastructure with all levels of government, who work together to enhance the security and resilience of critical infrastructure.

### Regulatory harmonisation

- The Department of Home Affairs and the Critical Infrastructure Security Centre (CISC) are committed to being a best-practice regulator. It is noted that challenges exist between and within sectors where there is a wide disparity in security maturity levels, regulation, approaches to information-sharing and disclosure.
- The CISC is responsible for the regulation of critical infrastructure assets under the:
  - *Security of Critical Infrastructure Act 2018 (SOCI Act)*
  - *Aviation Transport Security Act 2004*
  - *Maritime Transport and Offshore Facilities Security Act 2003.*

### Climate adaptation

- As critical infrastructure continues to evolve, and changing weather patterns increase the frequency and severity of some natural hazards, relying on past experience may no longer work and asset owners and operators should be willing to adapt to the changing climate.